

**BREATHE
EASIER**

The PORTACOUNT® PRO+ Respirator Fit Tester Delivers
Fit Testing Healthcare Professionals Can Trust



HEALTH AND SAFETY

Respirator Fit Testing



TRUST. SCIENCE. INNOVATION.



Fit testing the right way means you're improving your risk management program while increasing productivity because your healthcare team is more comfortable and confident. Equally important, you're complying with regulations. The PORTACOUNT PRO+ Respirator Fit Tester is more than a piece of equipment. It's peace of mind.

Introducing the New PORTACOUNT PRO+ Fit Tester With Built-In N95 Companion™ Technology:

- New faster P1 and P2 fit testing time
- Simpler and easier to use
- European state compliant for all respirators, including P1 and P2
- Stand-alone operation, no external computer required



Right Way



Fast, Easy, OSHA-Accepted Fit Testing

You don't have to struggle with tedious and error-prone qualitative methods like saccharin, Bitrex® and irritant smoke. The PORTACOUNT PRO+ fit tester measures the actual fit, eliminating the guesswork associated with qualitative methods. It performs respirator fit measurements under conditions approximating actual use as defined by fit test protocols. It measures fit while the wearer performs a series of moving, breathing and talking exercises designed to simulate movements made while wearing the respirator in the workplace.

Stand-Alone Operation, No Computer Necessary

The PORTACOUNT PRO+ fit tester is quicker to set up and easier to operate because it does not require an external computer. The color touch screen lets you control the test with a touch of your finger, pen or stylus. However, a computer is necessary for report generation and optional fit test card printing. Simply plug in a USB flash-drive to store fit test data and transfer to a PC for record keeping.

Quantitative Testing Even on P1 and P2 Respirators

Your healthcare organisation may already be using P1 or P2 disposable (filtering-facepiece) respirators for protection from tuberculosis, SARS or other airborne infectious diseases. The PORTACOUNT PRO+ fit tester is the only instrument capable of performing quantitative fit testing on these respirators.

A respiratory protection program that includes annual fit testing is key to your healthcare organisation regulatory compliance as well as your staff's comfort and protection so that you can continue to provide patient care. Your best insurance is a strong respiratory protection program that includes the PORTACOUNT PRO+ fit tester.



The New PORTACOUNT PRO+ Fit Tester:

- Delivers faster P1 and P2 fit test times – down from 10.24 seconds to only 7.15 seconds
- Offers greater simplicity with the built-in N95 Companion technology
- Redesigned DMA for enhanced performance
- Ability to perform fit testing on P1 and P2 respirators with much lower ambient particle concentrations
- Reduces the need for an external particle generator

Regulatory Compliance

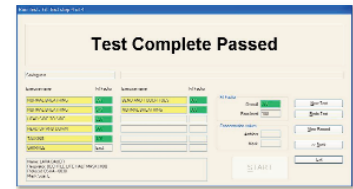
The OSHA Respiratory Protection Standard specifically recognizes the PORTACOUNT fit tester and provides specific fit test protocols. The PORTACOUNT PRO+ fit tester and FITPRO™ Fit Test software are extremely flexible and can be used for compliance with all respiratory protection standards, regulations and guidelines including:

- HSE 282/28 (United Kingdom)
- CSA Z94.4 (Canada)
- AS/NZS 1715 (Australia/New Zealand)
- ANSI Z88.10
- OSHA/CDC/WHO Pandemic/Terrorism Preparedness Guidelines
- OSHA 29 CFR 1910.134
- CDC Tuberculosis Guideline
- Joint Commission (LD.1.30)



FITPRO™ Fit Test Software Makes Testing Simple

The FITPRO software program automatically leads you through the fit test protocol step by step. You can't make a mistake and your fit test results are stored in a



database for easy report generation, retrieval and regulatory compliance. Want to know who is due for a fit test? Simply use the built-in report generation features to print a list.

FITPRO software along with the optional Card Printer allows you to print fit test cards for everyone you fit test. This is a convenient way for staff to have verification that they passed a recent fit test and to make sure they are using the correct respirator make, model and size. The card also helps them remember when their next fit test is due.

PORTACOUNT PRO Fit Testers Verify Mask Fit and Document Training

Use the Real-Time Fit Factor Display as part of your annual respiratory protection training program. It shows staff in real time the effects of mask positioning and strap tightness as they conduct and learn proper respirator donning procedures. This is especially helpful for learning how to properly form the flexible nosepiece commonly found on the filtering facepiece (disposable) respirators.

Passing a fit test with the PORTACOUNT PRO+ fit tester provides hardcopy documentation that the person has learned how to don the mask properly and has been issued a mask that is properly sized to achieve rated protection levels. You'll know the mask offers the best fit possible.

Insist on the PORTACOUNT PRO+ Respirator Fit Tester... for fit testing you can trust.

Model 8038 PORTACOUNT® PRO+ Respirator Fit Tester is patented under U.S. Patent No. 6,125,845.

TSI, the TSI logo, and PORTACOUNT are trademarks of TSI Incorporated.

TSI Incorporated serves a global market by investigating, identifying and solving measurement problems. As an industry leader in the design and production of precision instruments, TSI partners with research institutions and customers around the world to set the standard for measurements relating to aerosol science, air flow, health and safety, indoor air quality, fluid dynamics and biohazard detection. With headquarters based in the U.S. and field offices throughout Europe and Asia, TSI has established a worldwide presence in the markets we serve. Every day, our dedicated employees turn research into reality.

TSI Incorporated - 500 Cardigan Road, Shoreview, MN 55126 USA

USA	Tel: +1 800 874 2811	E-mail: info@tsi.com	Website: www.tsi.com
UK	Tel: +44 149 4 459200	E-mail: tsiuk@tsi.com	Website: www.tsiinc.co.uk
France	Tel: +33 491 11 87 64	E-mail: tsifrance@tsi.com	Website: www.tsiinc.fr
Germany	Tel: +49 241 523030	E-mail: tsigmbh@tsi.com	Website: www.tsiinc.de
India	Tel: +91 80 41132470	E-mail: tsi-india@tsi.com	
China	Tel: +86 10 8260 1595	E-mail: tsibeijing@tsi.com	
Singapore	Tel: +65 6595 6388	E-mail: tsi-singapore@tsi.com	

Contact your local TSI Distributor or visit our website www.tsi.com for more detailed specifications.

