

Methods for StereoPIV Analysis in *INSIGHT 3G*™ Software

Application Note PIV-015

Obtaining StereoPIV data involves two steps: cross-correlation and dewarping-interpolation. The order in which these steps are performed can be manipulated in the *INSIGHT 3G*™ software, as designated to be Methods 1 and 2. The procedures given below describe the two methods.

Method 1: Perform the cross-correlation, then dewarp and interpolate the resulting vector fields.

Method 2: Dewarp the images, perform the cross-correlation, and then interpolate the resulting vector fields.

Method 1: This is the “Default” method outlined in the *INSIGHT 3G*™ software manual. Please refer to the manual for the exact procedure. An outline of this procedure is given below. Assuming the Stereo calibration is already complete, the data is analyzed in the following way.

1. In the “Process Setup” box, the PIV parameters are set, and in the 3D Stereo Calibration field, the standard calibration is chosen (i.e., runname.PIVPerCal). In the example below, the Run Name is “stertest”:

The screenshot shows the 'PIV Processor Setup' dialog box with the following settings:

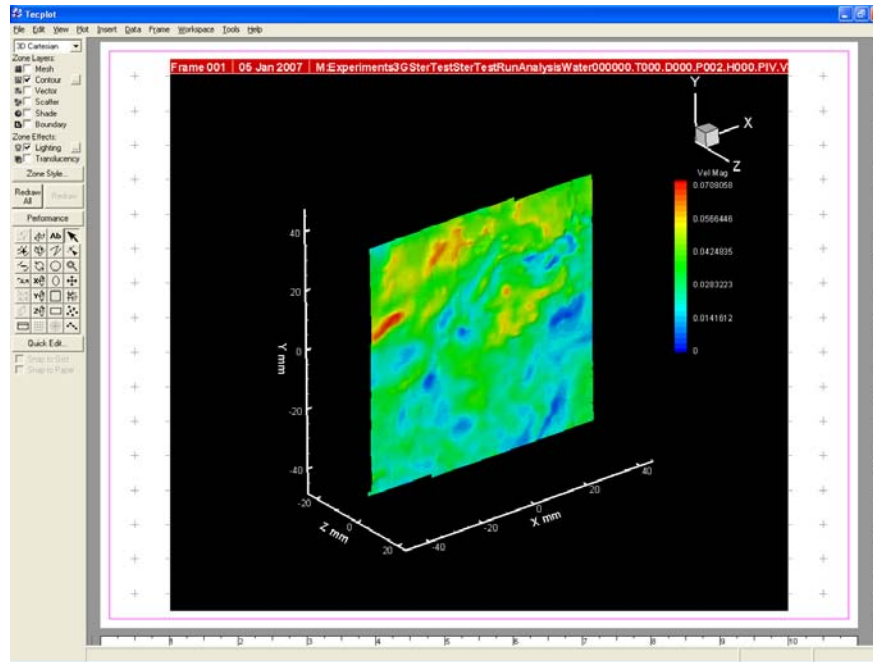
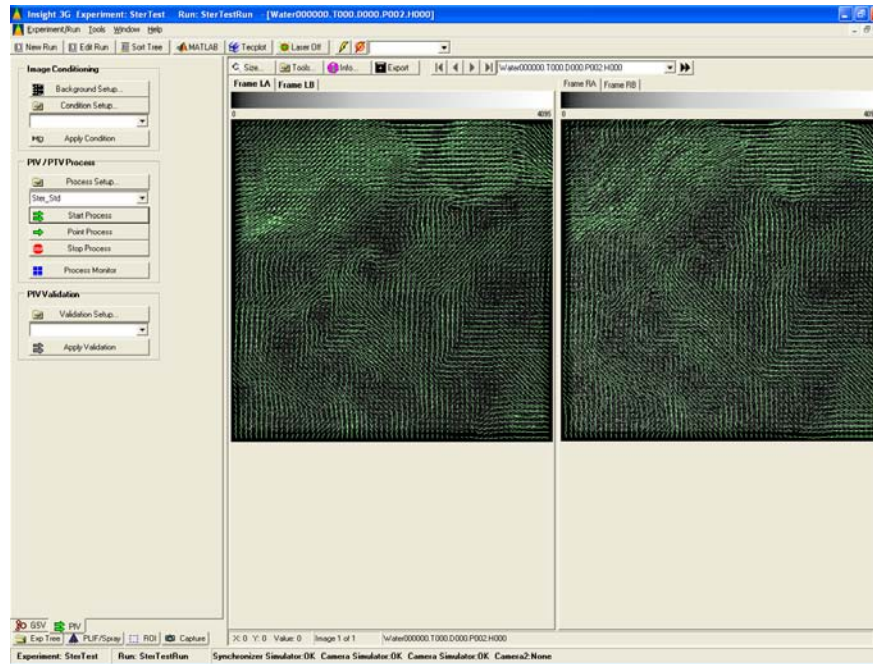
- Processing Mask:** Camera 1: None, Camera 2: None. Process the area inside the mask.
- Plugins:** Grid Engine: NyquistGrid, Spot Mask Engine: NoMask, Correlation Engine: FFTCorrelator, Peak Engine: GaussianPeak. A 'Plugin Settings...' button is present.
- Calibration:** 2D Camera 1: None, 2D Camera 2: None, 3D Stereo: stertest.
- Validation:** Pass: None, Final: None.
- Spot Sizes:**

	Width	Height
Starting Spot Dimensions		
Spot A	64	64
Spot B	64	64
Final Spot Dimensions		
Spot A	16	16
Spot B	16	16
- Maximum Displacement:** 16
- Correlation:**
 - Cross
 - PIV
 - Stereo Dewarp Test
 - Auto A
 - Auto B
 - Keep Correlation Maps For Validation

Buttons for 'OK' and 'Cancel' are at the bottom right.



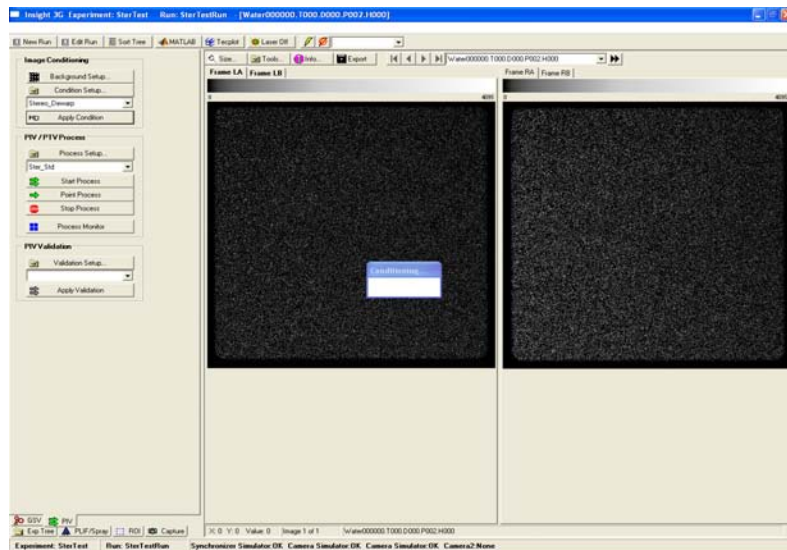
2. Load the images that are to be processed into the active field, and press “**Start Process.**”
3. The vector fields are generated on each of the raw images, and then the vectors are dewarped and interpolated to generate the 3D velocity field.



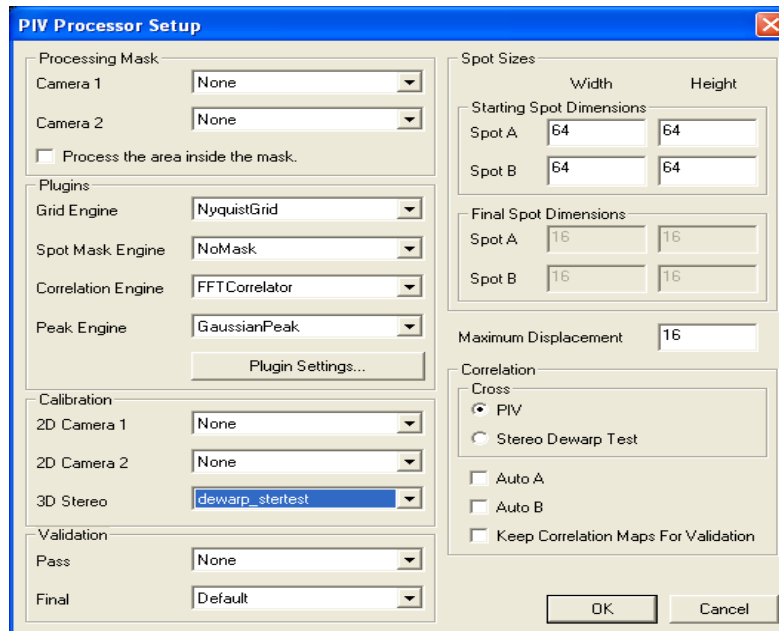
Method 2: This method requires that the images are dewarped prior to the correlation. Assuming the calibration is already complete; to perform this method, follow the steps below:

1. On the “PIV” tab, click on “**Conditions Setup.**”
2. Under “Realization Conditioner,” select the “**DewarpImageProcessor.**”
3. Under “Camera Left,” click the “**Frame A**” button.
4. Select the standard calibration.
5. Select the same calibration file for LB, RA, and RB.

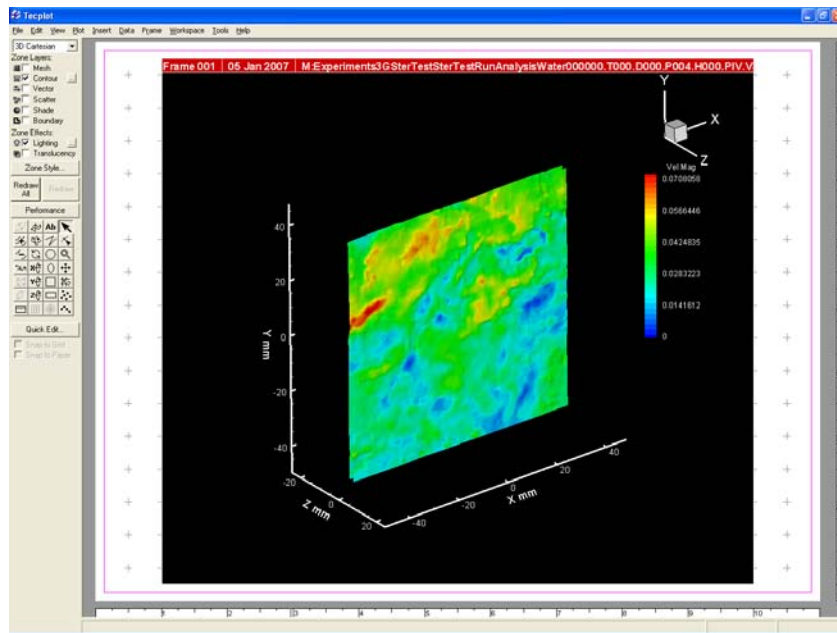
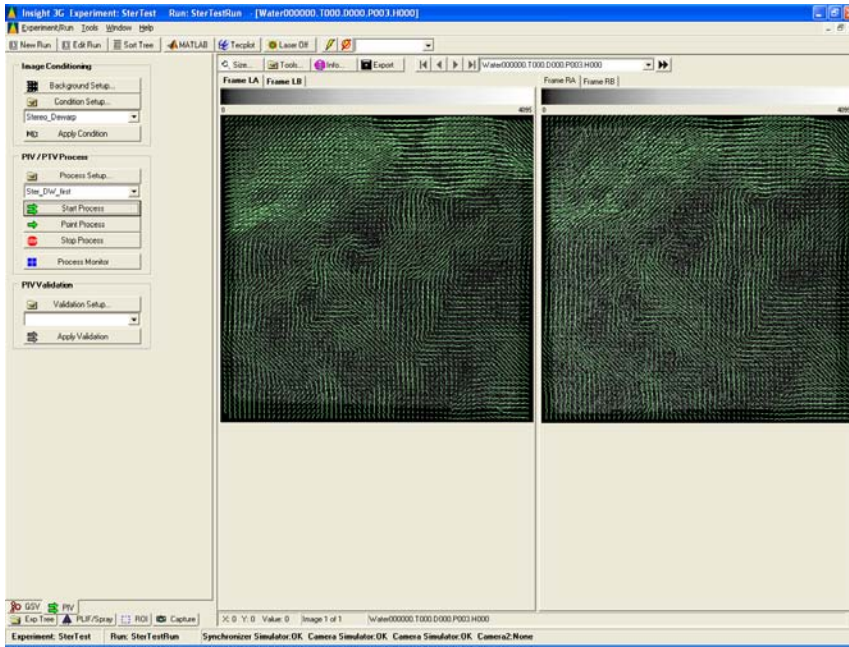
6. You will be prompted to name this conditioner.
7. When finished, click “Close.”
8. Load the images you want to process into the active field.
9. With the name of the Dewarping Processor in the “Image Conditioning” field, click “Apply Condition.”



10. The images will be dewarped according to the calibration.
11. Now go to the “Process Setup” box. This time, under the 3D Stereo Calibration field, select the “dewarp_runname.PIVPerCal.” In the example below, this is “dewarp_stertest.”



12. Click **OK**.
13. Press the “**Start Process**” button to perform the data analysis on the dewarped images.
14. The cross-correlation is performed on the dewarped images and the resulting vector fields are interpolated based upon the calibration.



TSI Incorporated – 500 Cardigan Road, Shoreview, MN 55126 U.S.A

USA	Tel: +1 800 874 2811	E-mail: fluid@tsi.com	Website: www.tsi.com
UK	Tel: +44 149 4 459200	E-mail: tsiuk@tsi.com	Website: www.tsiinc.co.uk
France	Tel: +33 491 11 87 64	E-mail: tsifrance@tsi.com	Website: www.tsiinc.fr
Germany	Tel: +49 241 523030	E-mail: tsigmbh@tsi.com	Website: www.tsiinc.de
India	Tel: +91 80 41132470	E-mail: tsi-india@tsi.com	
China	Tel: +86 10 8260 1595	E-mail: sibeijing@tsi.com	
Singapore	Tel: +65 6595 6388	E-mail: tsi-singapore@tsi.com	



Contact your local TSI Distributor or visit our website www.tsi.com for more detailed specifications.