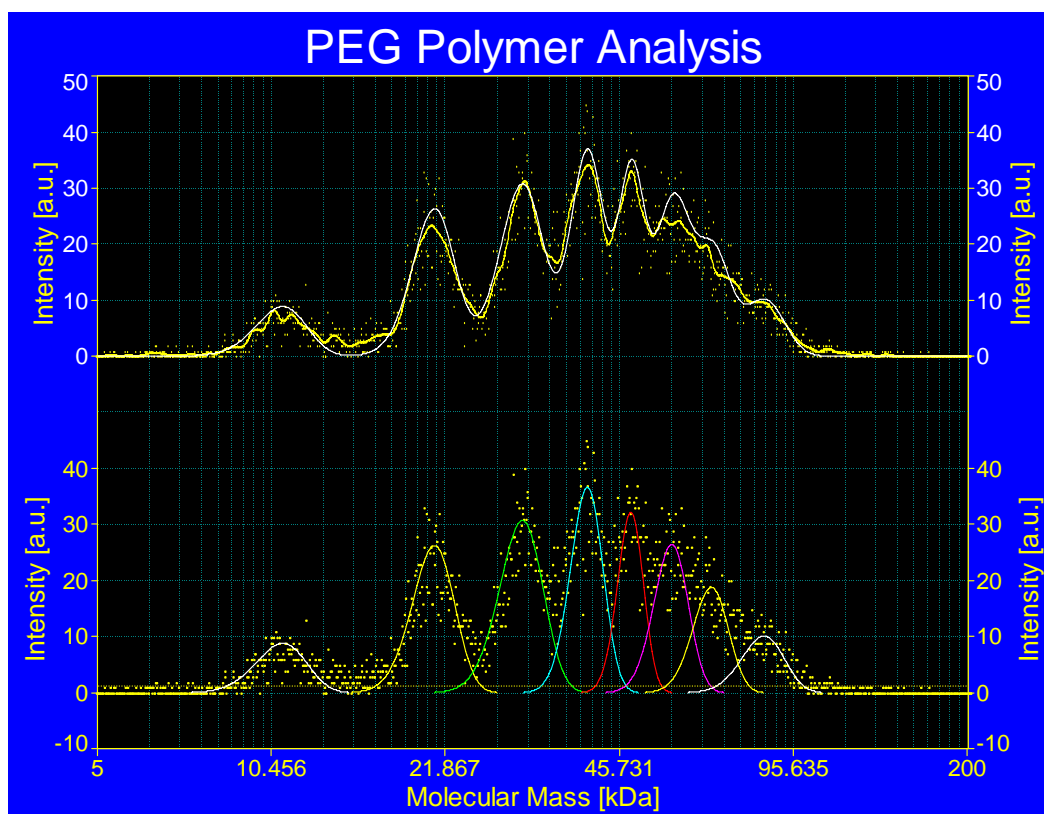


Water-soluble PEG Polymer— *macroIMS*[™] mass spectrum with peak fitting

A *macroIMS* mass spectrum of a polyethylene glycol (PEG) mixture exported from *macroIMS* Manager Software into PeakFit v.4.12 (SeaSolve Software Inc., not included or sold by TSI). The PeakFit software deconvolutes the overlapping data into 8 peaks (lower trace) which explain the signal observed by the *macroIMS* system. In the upper trace, the yellow line and yellow dots represent the raw data, and the white line represents the sum of the colored Gaussian peaks in the lower trace.



TSI Incorporated
500 Cardigan Road, Shoreview, MN 55126 USA
Tel: 651 490 2811 Toll Free: 1 800 874 2811 Fax: 651 490 3824
E-mail: chem@tsi.com Web: www.tsi.com

